

# LOW BOILER PRESSURE: HOW TO TOP IT UP YOURSELF



There's nothing quite worse than having low boiler pressure and it turning your boiler off. Keeping your home's central heating system in check is essential and we often forget just how much we rely on it when it comes to keeping our homes warm.

Topping up your boiler pressure is easy to do and can be carried out without the help of a heating engineer.

If your Baxi boiler pressure is too low, follow the steps below and if that fails or you're still unsure please call us on 01454 411172 and we will be able to advise further.

# What Model do I Have?

Elim uses two types of Baxi boiler. You will either have a **Baxi Duo Tech Boiler – Built in Filling Loop** or a **Baxi Duo Tech Boiler – Internal Filling Loop**. If you are unsure which model you have, please call us and we will be able to advise.

## Baxi Duo Tech Boiler – Built in Filling Loop Models:



# 1

You will know if your boiler pressure needs topping up as you may have an error code E118 displayed on your boiler screen with the spanner or water symbols showing.

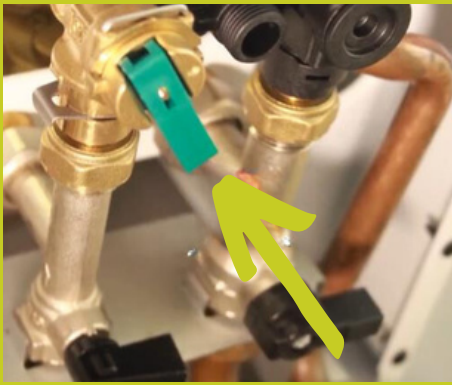
# 2

Your pressure gauge will move to the red, which is telling your pressure is too low and needs topping up.



# 3

On the Baxi Duo Tech boilers on the front right-hand side you will see a permanent blue/ green filling link beneath the boiler.



# 4

On the Baxi Duo Tech boilers on the front right-hand side you will see a permanent blue/ green filling link beneath the boiler.

# 5

Slowly pull the green/ blue lever down and watch the pressure rise on the gauge to 1.5 bar.

Once the pressure is just over 1.5 bar turn the lever off, by pushing it carefully back.



# 6

Release the lever. You may see a few drops of water from the lever, this is normal.

**Do not overfill the pressure past 1.5 bar on the gauge as it could damage the boiler and system.**

# Baxi Duo Tech Boiler – Internal Filling Loop Models:



## 1

You will know if your boiler pressure needs topping up as you may have an error code E118 displayed on your boiler screen with the spanner or water symbols showing.

## 2

Your pressure gauge will move to the red, which is telling your pressure is too low and needs topping up.



## 3

On the Baxi Duo Tech boilers underneath you will see two black wheels.

## 4

Slowly turn the left wheel towards the back of the boiler to open the cold water supply to the boiler.

**Always remember left to loosen, right to tighten the wheels.**



# 5

Slowly turn the right wheel towards the front of the boiler this will allow water into the boiler – keep watching the gauge.



# 6

Carefully watch the gauge. Once the pressure is at 1.5 bar turn the right wheel off.

# 7

Once the pressure is at 1.5 bar turn the right wheel off.

Then turn the left wheel off.

**Always remember left to loosen right to tighten the wheels.**

Your boiler should begin to work and the error code should have gone off the main screen.



**Do not overfill the pressure past 1.5 bar on the gauge as it could damage the boiler and system.**